

## COLLAPSIBLE GATES

Bolton Gate Collapsible Gates provide high security against vandals, burglars and other intruders. Collapsible Gates are specified for use on underground stations, car parks and in a wide range of commercial situations where the ability to see through the gate not only deters criminals, but also provides optimum ventilation and vision.

All gates are custom-made for individual openings and can be supplied top hung or bottom rolling with the optional facility to be hinged aside for locations on shop entrances, window protection and small openings where a clear width is of premier importance.

### STANDARD SPECIFICATION

#### **Construction**

The gates are manually operated and built from double channel steel vertical pickets connected by lattice bars. All gates are prepared to take a swivel beak lock to accept padlocks by others.

#### **Finish**

Galvanised as standard.

### GATE TYPES

#### **Top Hung Gates**

A top hung gate should be used wherever possible due to its superior operating capabilities.

Single gates up to 2500mm high and/or 3000mm wide are suspended from a flat bar top track. This is fixed at each end and has a rounded top edge to facilitate operation. Larger gates have a box type top track. Top hung gates incorporate channel bottom tracks set into the floor.

#### MAXIMUM SIZES

Singles: 8 metres wide x 6 metres high  
Pairs: 16 metres wide x 6 metres high

#### **Bottom Rolling Gates**

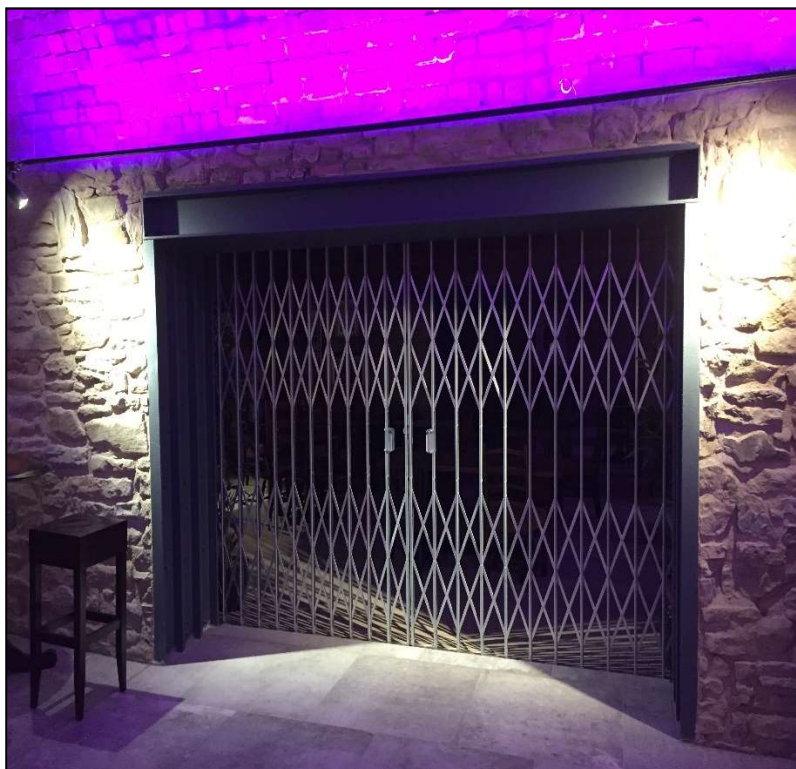
These gates run on a flat bar bottom track which can be folding or portable for smaller openings. Where the gate is required to hinge aside when bunched, a "T" section top track is used. The weight of the gate is supported by pulleys at the base of the pickets. Hinging aside is not available when the opening size exceeds 1500mm wide or 3000mm high.

#### MAXIMUM SIZES

Singles: 1.5 metres wide x 3 metres high  
Pairs: 3 metres wide x 3 metres high

#### **Spearhead Gates**

Pointed spearheads can be attached to the top of pickets to offer climb-over protection where lintels are not available for head fixings.



Spearhead gates run on a flat bar bottom track which is folding or portable. The top track is a folding or portable flat bar. The weight of the gate is supported by pulleys at the base of the pickets. Pairs are supplied with removable centre post and fixing stay.

#### MAXIMUM SIZES

Singles: 1.5 metres wide x 2 metres high  
Pairs: 3 metres wide x 2 metres high

#### GATE ARRANGEMENTS

Collapsible Gates can be supplied to fit between jambs and under the lintel or face-fixed internally or externally. Gates are supplied single (bunching to one side) or in a pair, i.e. bi-parting.

#### WEIGHT

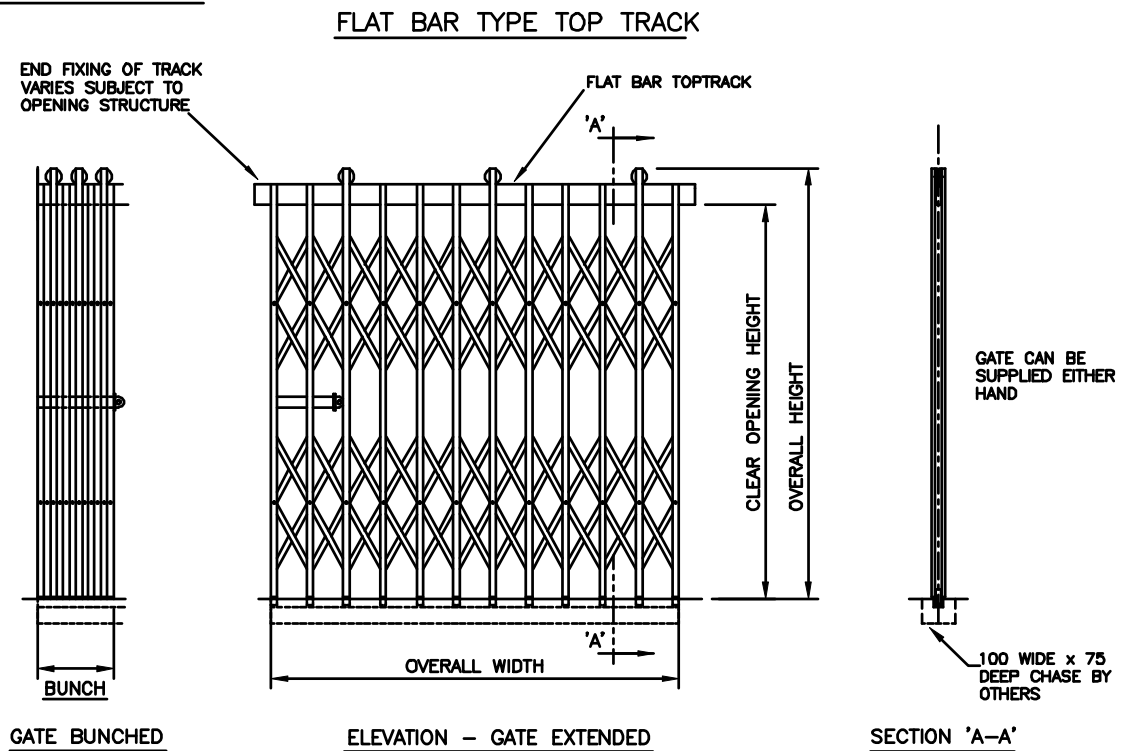
Approximately 32 kgs per m<sup>2</sup>.

#### OPTIONS

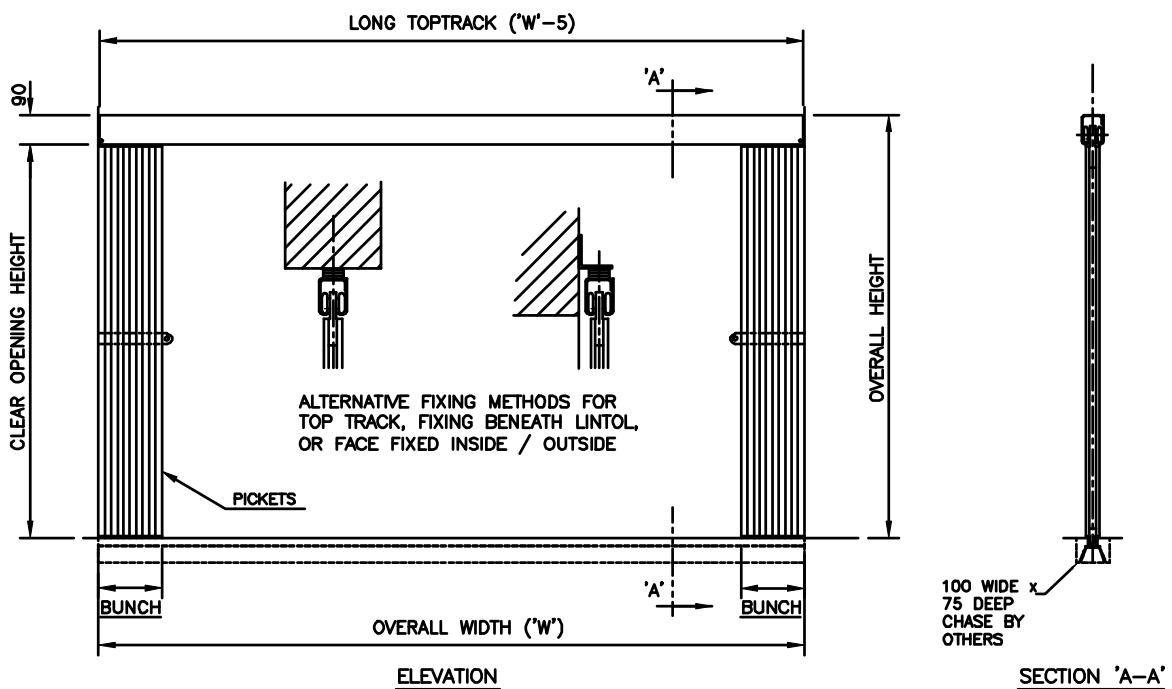
The following are available on all gates, unless otherwise stated:  
Locking - Hook bolt lock  
Finish - Polyester powder coated to a range of RAL colours  
Plated Leading Edge - For increased strength and security  
Mid Bar Gates - For increased security  
Parallel Bunch - For limited bunch problems  
Floating Gates - Top hung only

## COLLAPSIBLE GATES

### TOP HUNG GATES

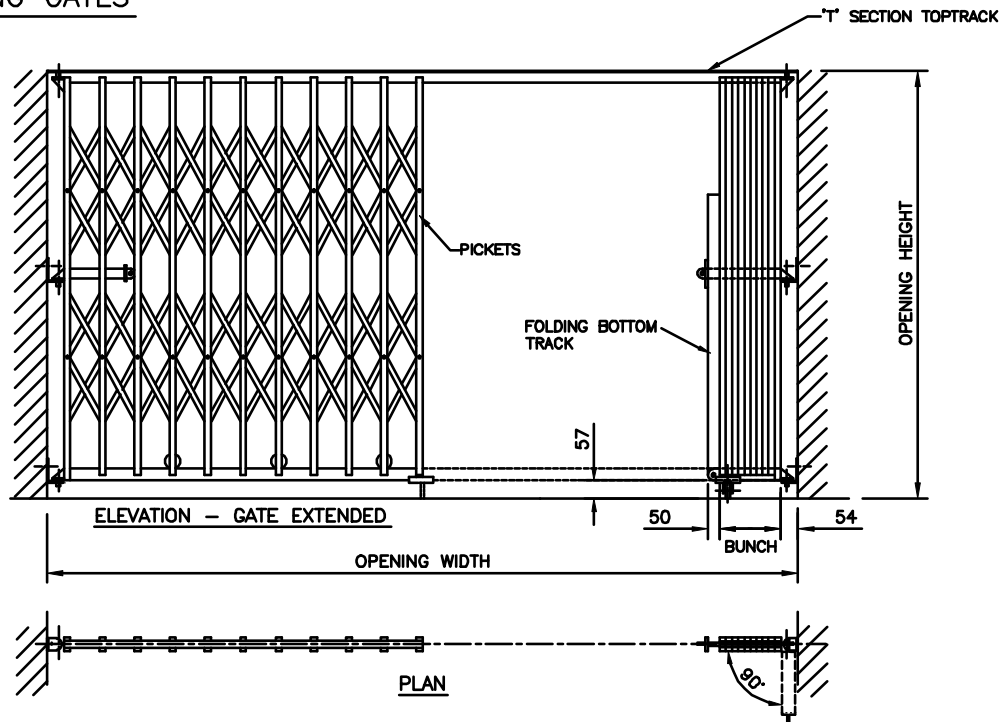


### BOX TYPE TOP TRACK

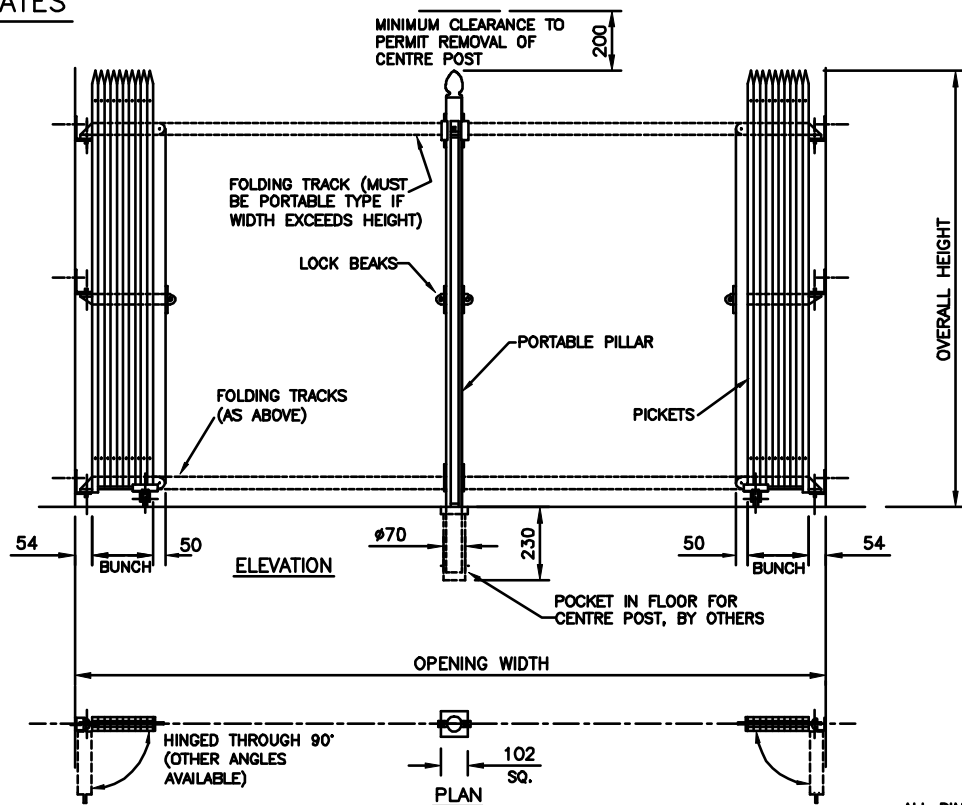


## COLLAPSIBLE GATES

### BOTTOM ROLLING GATES



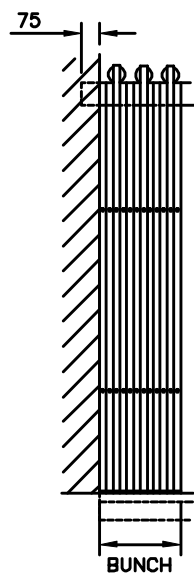
### SPEARHEAD GATES



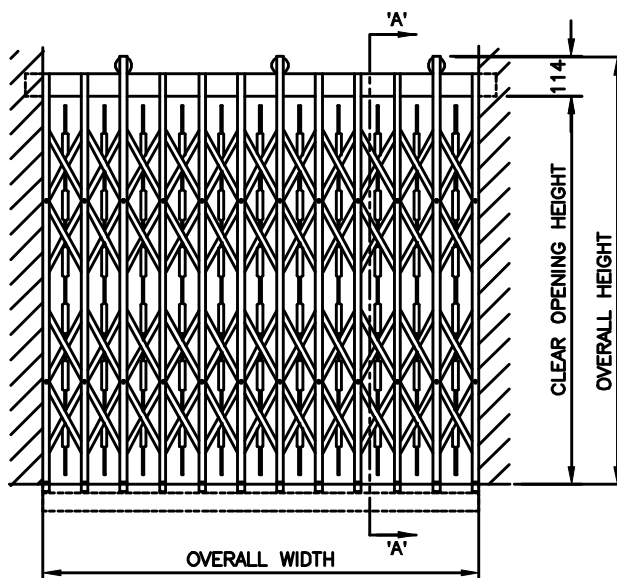
ALL DIMENSIONS IN mm.

## COLLAPSIBLE GATES

### MID-BAR GATES (MAJOR DETAILS AS ORDINARY TOP HUNG GATE)



GATE BUNCHED



ELEVATION - GATE EXTENDED



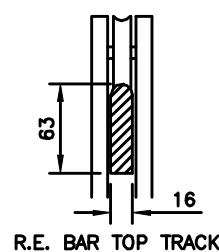
SECTION 'A-A'

MAXIMUM EXTENDED WIDTH	BUNCH	CLEAR OPENING
610	87	523
762	105	657
914	122	792
1067	140	927
1219	157	1062
1372	175	1197
1524	192	1332
1676	210	1466
1829	227	1602
1981	244	1737
2134	262	1872
2286	279	2007
2438	297	2141
2591	314	2277
2743	332	2411
2895	349	2546
3048	367	2681
3200	384	2816
3353	402	2951
3505	419	3086

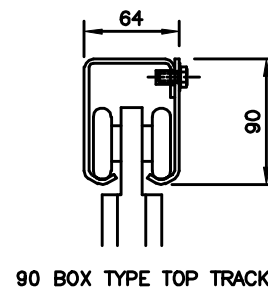
NOTE! ABOVE DETAILS ARE FOR GATES WITH 16mm PICKETS, FOR REQUIREMENTS OF 19mm PICKET GATES, OR FOR LARGER WIDTHS, PLEASE APPLY FOR DETAILS.

### TRACK TYPES

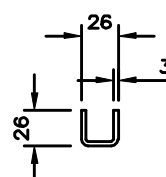
#### TOP HUNG



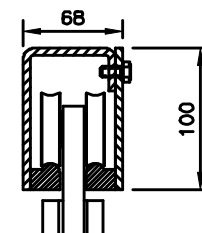
R.E. BAR TOP TRACK



90 BOX TYPE TOP TRACK

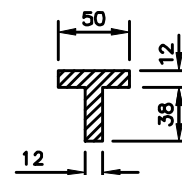


CHANNEL TYPE BOTTOM TRACK

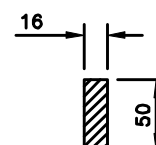


100 BOX TYPE TOP TRACK

#### BOTTOM ROLLING



T TYPE TOP TRACK



FLAT BAR BOTTOM TRACK